

TEXAS WOMEN IN THE WORKFORCE

Women play a critical role in the Texas economy. Their earnings represent an increasingly significant portion of household income, directly affecting the economic security of families, communities and the state as a whole. Not only do women hold nearly half of the state's 12.4 million jobs, they create jobs through their ongoing entrepreneurial efforts.

MORE THAN

6 MILLION

JOBS HELD BY TEXAS WOMEN

EVERY DOLLAR EARNED BY WOMEN

in Texas results in an estimated \$2.05 in wages, salaries and other compensation throughout the state economy.

Sources: Emsi, RIMS II

POPULATION OF TEXAS WOMEN:

14.2 MILLION

Women of prime working age – 25 to 54 years old – make up

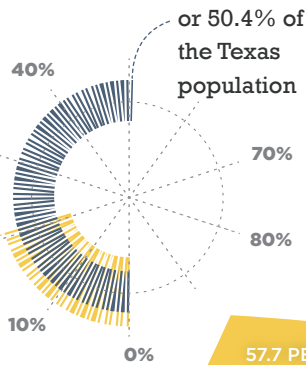
20.2%

of the entire state population and

40.1%

of Texas' female population.

Source: Emsi



57.7 PERCENT OF WOMEN 16 YEARS OLD OR OLDER ARE EITHER EMPLOYED OR LOOKING FOR WORK.

Source: U.S. Census Bureau

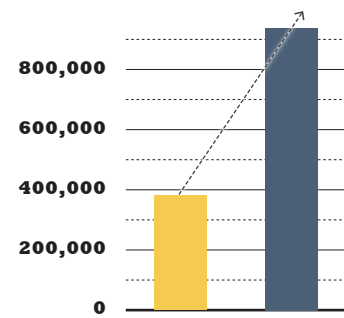
51.3% OF TEXANS WITH A BACHELOR'S DEGREE OR HIGHER ARE WOMEN.

TEXAS HAS THE THIRD HIGHEST NUMBER OF WOMEN-OWNED BUSINESSES IN THE U.S.

Estimated 938,800

in 2017, up more than

+146.1%



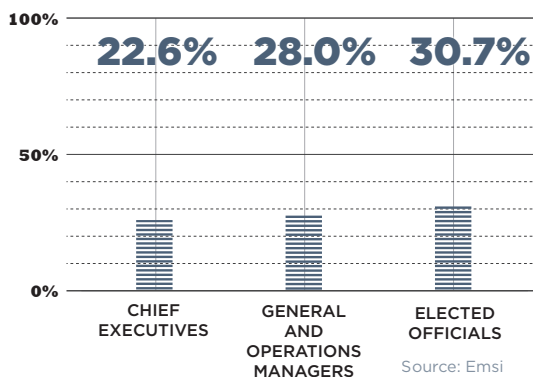
Source: American Express

AMONG THE TOP 10 MOST POPULOUS STATES, TEXAS RANKS SEVENTH BY SHARE OF WOMEN-OWNED BUSINESSES PER 1,000 RESIDENTS

WOMEN HOLD 27.8% OF JOBS IN TOP-LEVEL EXECUTIVE OCCUPATIONS

Source: Emsi

WOMEN'S SHARE OF TOP EXECUTIVE OCCUPATIONS IN TEXAS:



Source: Emsi

CONCLUSION

In 2017, more than 6 million women worked in industries supporting the state economy. In addition, **THE NUMBER OF BUSINESSES OWNED BY WOMEN IN TEXAS HAS RISEN BY 146 PERCENT OVER THE LAST 20 YEARS**, outpacing growth at the national level. A financially secure Texas depends on financially successful women.

To see more in-depth data on women in the workforce, visit:

comptroller.texas.gov/economy/economic-data/women/

Glenn Hegar

Texas Comptroller of Public Accounts

TEXAS WOMEN IN NATURAL RESOURCES AND MINING

THIS INDUSTRY CONTRIBUTED

\$122.6 BILLION

to state GDP in 2016.

JOBS HELD BY TEXAS WOMEN IN THIS INDUSTRY

65,000

These jobs generate additional business activities that ultimately support nearly 73,000 jobs in other industries of the Texas economy.

Sources: BEA, Emsi, Texas Comptroller of Public Accounts

The natural resources and mining industry, sometimes called a “super sector,” comprises two distinct sectors — agriculture, forestry, fishing and hunting, which engages in growing crops, raising animals and harvesting timber and fish; and mining, quarrying and oil and gas extraction, which extracts naturally occurring minerals and gases.

In 2016, natural resources and mining contributed \$122.6 billion to Texas’ economy. **WOMEN ACCOUNT FOR 22 PERCENT OF THE STATE’S 290,000 JOBS IN THIS INDUSTRY.**

TEXAS HAS A HIGHER SHARE OF WOMEN WORKING IN MINING, QUARRYING AND OIL AND GAS EXTRACTION THAN THE NATION AS A WHOLE.

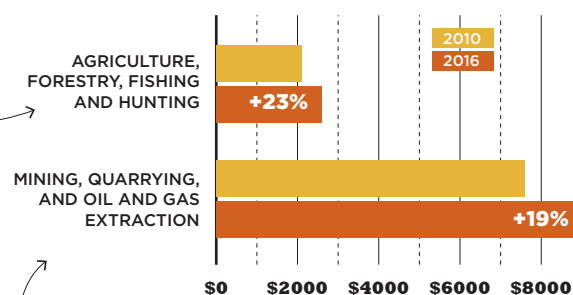
Based on location quotient (LQ), a measure of employment concentration in a given area, the concentration of mining, quarrying and oil and gas extraction jobs held by Texas women is 1.28 times higher than in the national sector.

Source: Emsi, Texas Comptroller of Public Accounts

	2017		WOMEN'S JOBS	WOMEN'S SHARE OF TOTAL JOBS
	TOTAL JOBS	AVG. ANNUAL EARNINGS PER JOB		
NATURAL RESOURCES AND MINING, TOTAL	292,301	\$122,645	65,452	22%
Agriculture, Forestry, Fishing and Hunting	78,563	\$37,208	21,269	27%
Crop Production	21,365	\$34,998	5,620	26%
Animal Production and Aquaculture	25,160	\$40,690	7,051	28%
Forestry and Logging	1,669	\$57,046	247	15%
Fishing, Hunting and Trapping	568	\$49,024	134	24%
Support Activities for Agriculture and Forestry	29,801	\$34,516	8,217	28%
Mining, Quarrying and Oil and Gas Extraction	213,738	\$154,048	44,183	21%
Oil and Gas Extraction	83,349	\$227,437	24,717	30%
Mining (except Oil and Gas)	11,032	\$88,294	1,614	15%
Support Activities for Mining	119,356	\$108,877	17,852	15%

Source: Emsi

AVERAGE MONTHLY EARNINGS OF WOMEN



WOMEN WORKING IN MINING, QUARRYING, AND OIL AND GAS EXTRACTION HAD THE HIGHEST AVERAGE MONTHLY EARNINGS IN 2016 (\$8,997).

From 2010 to 2016, women working in agriculture, forestry, fishing and hunting saw their average monthly earnings increase from \$2,110 to \$2,600.

Source: U.S. Census Bureau

IN THE NATURAL RESOURCES AND MINING INDUSTRY, FOR EVERY...

- 100 JOBS CREATED, AN ADDITIONAL 111 JOBS ARE SUPPORTED
- \$1 MILLION IN SALES, AN ADDITIONAL \$1.02 MILLION IN SALES ARE GENERATED
- \$1 MILLION IN EARNINGS GENERATED, AN ADDITIONAL \$1.10 MILLION IN EARNINGS ARE GENERATED

...IN ALL OTHER INDUSTRIES OF THE TEXAS ECONOMY

Sources: Emsi, Texas Comptroller of Public Accounts

CONCLUSION

Texas women working in natural resources and mining generate additional business activities that ultimately support about 73,000 jobs in other industries throughout the state economy. Though women do not account for high shares of employment in the natural resources and mining industry or its sectors, the concentration of jobs held by women in some of the industry’s various subsectors is higher in Texas than in the nation.

To see more in-depth data on women in the workforce, visit:

comptroller.texas.gov/economy/economic-data/women/

