

PORT OF ENTRY

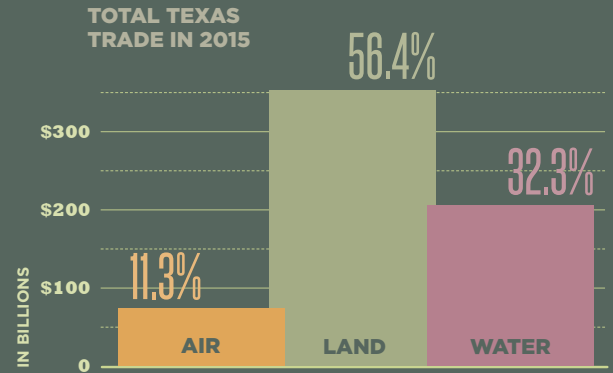
PORT OF BEAUMONT

Texas' location and diverse economy offer unique trade opportunities and make it a critical gateway to global business. Our state boasts **29 OFFICIAL PORTS** of entry facilitating nearly **\$650 BILLION** in international trade in 2015. Trade through Texas supports an estimated **1.6 MILLION TEXAS JOBS** and adds **\$224.3 BILLION** to GSP annually.

Ports of entry play a crucial role in making Texas the world's **10TH LARGEST ECONOMY**. They affect every part of our state, from our largest cities to rural counties. As the state's chief financial officer, I hope highlighting their benefits will emphasize their importance to strong, diverse and growing regional economies.



Glenn Hegar
Texas Comptroller of Public Accounts



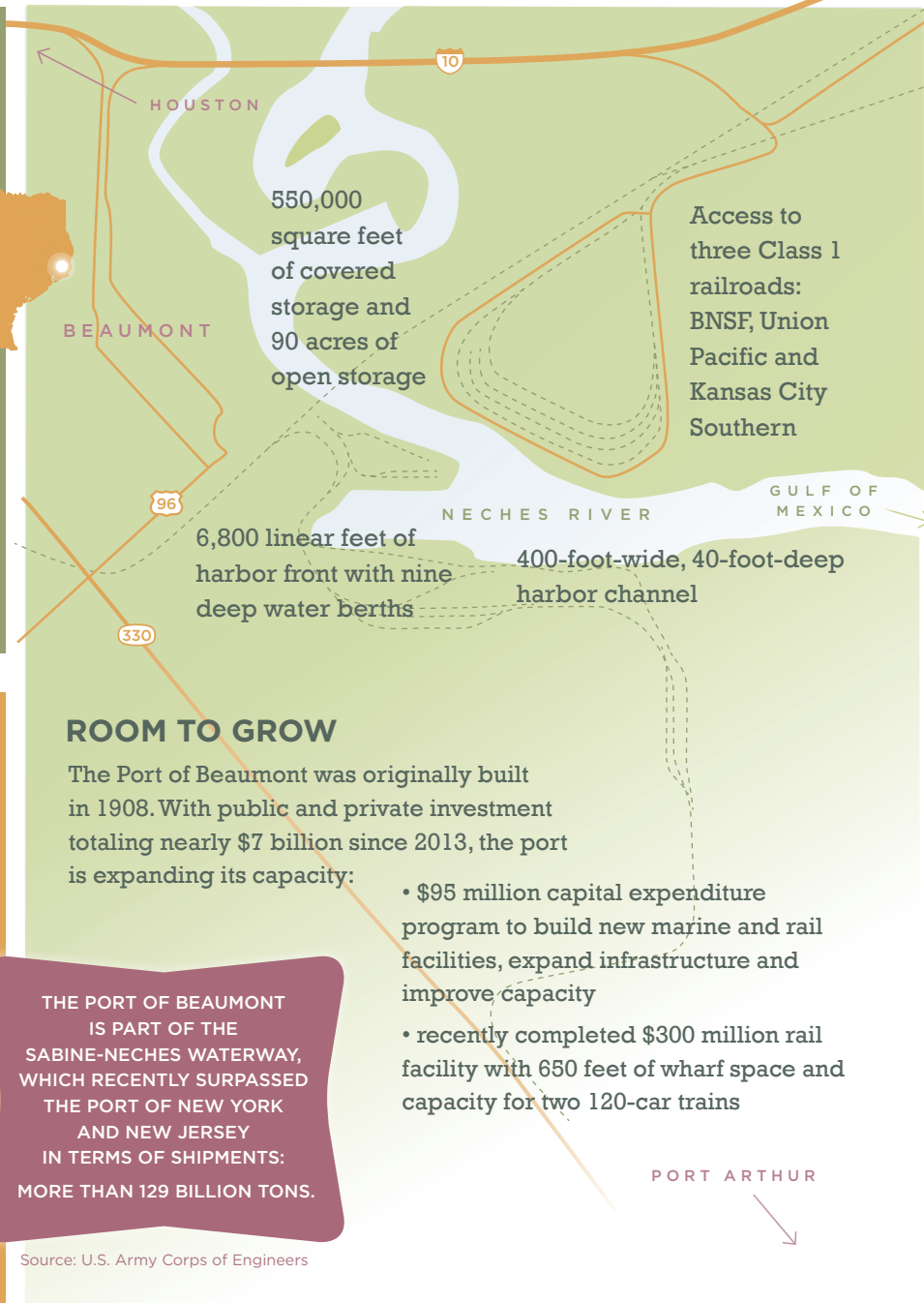
Source: U.S. Census Bureau

ABOUT PORT OF BEAUMONT

THE PORT OF BEAUMONT IS ONE OF 10 SEAPORTS ALONG TEXAS' 367-MILE GULF OF MEXICO COASTLINE. IT RANKS FOURTH IN THE NATION FOR OVERALL TONNAGE OF CARGO PROCESSED.



Source: Texas Department of Transportation



BY THE NUMBERS

The Port of Beaumont's contributions to the Texas economy from trade include:

TOTAL TRADE (2015) **\$8.2 BILLION**

DIRECT AND INDIRECT EMPLOYMENT **31,000**

GSP **\$4.4 BILLION**

Sources: Texas Comptroller of Public Accounts, REMI

ROOM TO GROW

The Port of Beaumont was originally built in 1908. With public and private investment totaling nearly \$7 billion since 2013, the port is expanding its capacity:

- \$95 million capital expenditure program to build new marine and rail facilities, expand infrastructure and improve capacity
- recently completed \$300 million rail facility with 650 feet of wharf space and capacity for two 120-car trains

THE PORT OF BEAUMONT IS PART OF THE SABINE-NECHES WATERWAY, WHICH RECENTLY SURPASSED THE PORT OF NEW YORK AND NEW JERSEY IN TERMS OF SHIPMENTS: MORE THAN 129 BILLION TONS.

Source: U.S. Army Corps of Engineers

PORT ARTHUR

PORT OF BEAUMONT: MILITARY READINESS

The Port of Beaumont has ties to a variety of military programs. The port holds a military strategic port designation from the U.S. Maritime Administration, meaning that it facilitates the

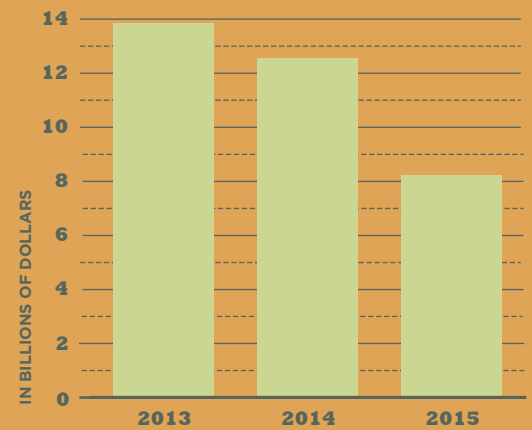
deployment of military forces and cargo.

IT'S HOME TO THE U.S. ARMY'S 842ND TRANSPORTATION BATTALION RESPONSIBLE FOR ALL MILITARY MARITIME LOGISTICS IN THE GULF OF MEXICO, THE PACIFIC NORTHWEST AND ALASKA.

Thanks to these and other activities, the Port of Beaumont is the busiest U.S. military port in the world.

Source: Port of Beaumont, U.S. Government Accountability Office

OVERALL TRADE VALUE



Note: Trade value decrease is directly related to the lower price of oil, as a significant portion of imports are from oil-producing countries.

Source: U.S. Census Bureau

PORT OF BEAUMONT: IMPORTS AND EXPORTS

IMPORTS:

MACHINERY
OIL
chemicals

EXPORTS:

PETROLEUM PRODUCTS
GRAINS
Chemicals

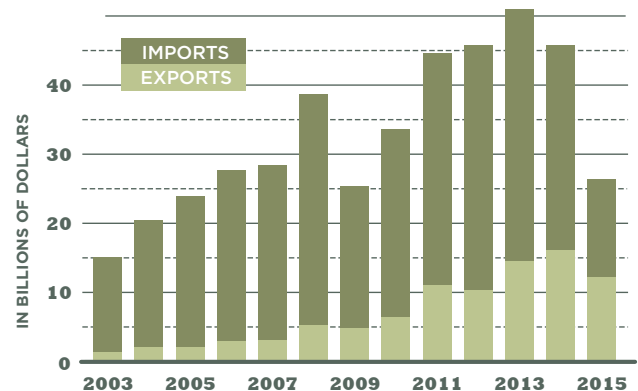
PORT ARTHUR CUSTOMS DISTRICT

The Port of Beaumont is part of the Port Arthur Customs District, which includes the following ports:

ORANGE
BEAUMONT
PORT ARTHUR
SABINE

THE PORT OF BEAUMONT HANDLES MORE THAN 87 MILLION TONS OF CARGO ANNUALLY, INCLUDING 53 MILLION TONS OF FOREIGN CARGO.

Source: Port of Beaumont



Source: U.S. Census Bureau

CONCLUSION

The Port of Beaumont accounts for **\$8.2 BILLION** of the **\$204 BILLION** in trade that travels through Texas' seaports. To keep those products moving, the port supports a net estimated **31,000 WORKERS**, and contributes **\$4.4 BILLION** to gross state product.

Port of Beaumont's diverse capabilities have helped Texas become the nation's largest exporter – and the world's 10th largest economy.

PORT OF BEAUMONT IS ONE OF 29 OFFICIAL TEXAS PORTS OF ENTRY.

To see a complete list, plus more in-depth regional data, visit:

comptroller.texas.gov/economy/economic-data/